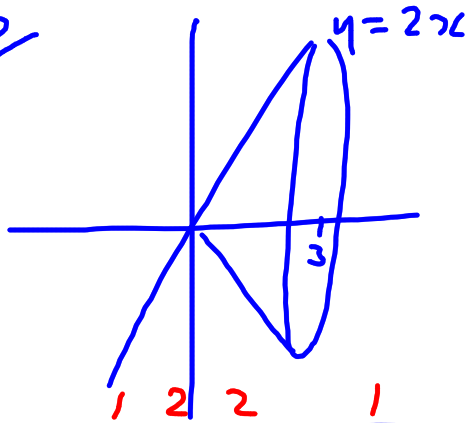


10/



x	0	1	2	3
$4x^2$	0	4	16	36

$$\% \text{ error} = \frac{2\pi}{36\pi} \times 100$$

$$=$$

$$V = \pi \int_0^3 y^2 dx$$

$$= \pi \int_0^3 4x^2 dx$$

$$= \pi \times \frac{h}{2} \{y_0 + 2y_{\text{others}} + y_n\}$$

$$= \frac{\pi}{2} \{0 + 2(4 + 16) + 36\}$$

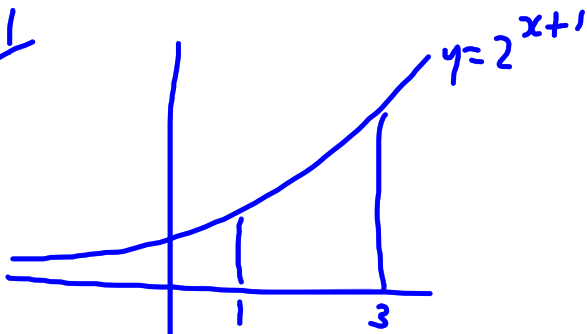
$$= 38\pi \text{ units}^3$$

$$b) V = 4\pi \left[\frac{1}{3}x^3 \right]_0^3$$

$$= \frac{4}{3}\pi (3^3)$$

$$= 36\pi$$

//



	1	2	2	2	1
x	1	1.5	2	2.5	3
4^x	4	8	16	32	64

$$\begin{aligned} V &= \pi \int_1^3 y^2 dx \\ &= \pi \int_1^3 4^{x+1} dx \\ &= \pi \times \frac{1}{2} \left\{ y_0 + 2y_{\text{others}} + y_n \right\} \\ &= \frac{\pi}{4} \left\{ 4 + 2(8 + 16 + 32) + 64 \right\} \\ &= \underline{45\pi \text{ units}^3} \end{aligned}$$